

ESD Equipments for Production Line  
Clean Room and Electronics Equipments  
ESD Consumable Products

# Content

<b>ESD PACKING MATERIAL.....</b>	<b>1</b>
<b>PP CORRUGATED SHEET.....</b>	<b>7</b>
<b>ESD CONTAINER, TRAY.....</b>	<b>8</b>
<b>SMT PCB MAGAZINE RACK.....</b>	<b>10</b>
<b>ESD WIRE SHELF AND TROLLEY.....</b>	<b>15</b>
<b>ESD PCB TROLLEY, CART.....</b>	<b>18</b>
<b>ESD CHAIR.....</b>	<b>19</b>
<b>WORK BENCH.....</b>	<b>23</b>
<b>MOISTURE-PROOF CABINET.....</b>	<b>24</b>
<b>FLOOR MAT, TABLE MAT.....</b>	<b>25</b>
<b>ESD FLOOR.....</b>	<b>28</b>
<b>CLEANROOM PRODUCT .....</b>	<b>29</b>
<b>ESD TOOLS.....</b>	<b>35</b>



## LN-7011 Anti-static Shielding Bag

The normal film structure has 4 layers, from outside to inside as ESD Ployester, Metallized layer, Ployester, ESD Ployethylene.

Surface resistance :  $10^8$ - $10^{10}$ ohm.

Provide excellent protection for static sensitive products like: circuit boards, precision parts and accessories, electronic components, etc.

Any size can be ordered in open flat, zip-lock, and tridimensional styles, any bag for large machines can be customized.

### Technical Parameter

Number	Properties	Unit	Typical Value
1	Metallized Layer resistance	Ohm/sq	<100
2	Metallized Layer Light transmission		40%-0.4
3	Surface resistivity	Ohm/sq	< $10^{11}$
4	Static Decay	5000-0V	<0.05s
5	Friction Static	EIA541 Appendix C avg	Triboelectric Nsnocouiombs Quartz < $13n^{\circ}$ /in <sup>2</sup> Tefion< $1313 n^{\circ}$ /in <sup>2</sup>
6	Capacitance probe	EIA-541	<10V
7	Anti-erosion		FTMS 101Method 3005
8	Tensile strength	Lbs./in	>18
9	Tear initiation	Lbs./in	>2.5
10	Puncture resistance	p.s.l	>100
11	Seam strength	Lbs./in	8
12	MVTR barrier	gm/100in-2/24hrs	<0.2
13	Oxygen barrier	cc/100in-2/24hrs	<0.5
14	Heat sealing temperature	F	250-375
15	Heat sealing time	S	0.5-3.5
16	Heat sealing pressure	p.s.l	70
17	Externals	No stratification, wrinkles, warping, rupture, adhesion, foreign body, the bubble outside of sealing line $\Phi \leq 3mm$	

## ESD PACKING MATERIAL



### LN-7012 Moisture-barrier Bag

The normal film structure has 4 layers, from outside to inside as ESD Polyester, Aluminum foil, Intensified nylon, ESD Polyethylene. It has three main functions as resistance of static, resistance of electromagnetic interference and moisture proof. The product has superior puncture resistance and anti-static inner and outer layers with a surface resistance of  $10^8$ - $10^{10}$ ohm.

Any size can be ordered in open flat, ziplock, and tridimensional styles, any bag for large machines can be customized.

### Technical Parameter

Number	Electrical Properties	Standards	Typical Value
1	Puncture Strength	FTMS 101C, Method 2065.1	$\geq 22$ pounds
2	Vapor transmission rate	(ASTM F-1249@100°F/100sq in/24hrs)	$\leq 0.0003$ gms
3	Tensile Strength	ASTM D882-91, Method A	6000 PSI
4	Tear Initiation	ASTM D 1004-66 Notched	$\geq 3$ pounds
5	Shielding performance	Mil-PRF-81705, EIA 541 or EOS/ESD S11.31	< 30 V Or < 10 nJ
6	Shielding voltage	EIA541	<30V
7	Interior surface resistivity	ASTM D-257	< $10^{11}$ Ω
8	Exterior surface resistivity	ASTM D-257	< $10^{11}$ Ω
9	Metalized Layer resistivity	ASTM D-257	<0.1Ω
10	Decay time	Mil-PRF-81705, FTMS 101 MTH 4046	<0.05s
11	Heat sealing temperature		150°C - 200°C
12	Heat sealing pressure		30 - 70 PSI
13	Heat sealing time		0.6-4.5s



## ESD PACKING MATERIAL



### LN-7013 Nylon Vacuum Bag

It is made of NY/CPE or PET/NY/CPE. The product has good anti-static performance, and it can be well vacuumed. It has high transparency, low oxygenation rate, good moisture-proof performance and strong puncture strength. It is also easy to heat sealing, and it's hard to aging.

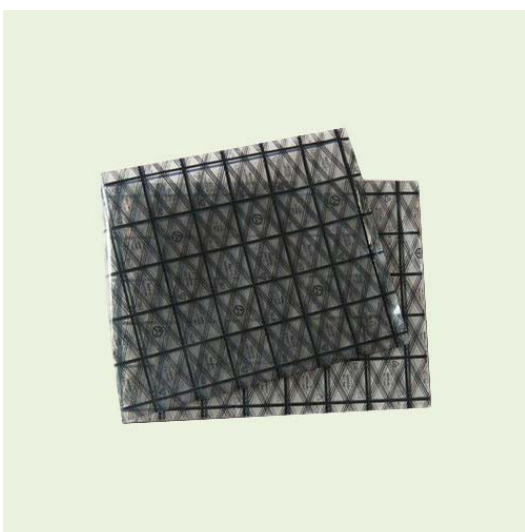
Any size can be ordered in open flat, ziplock, and tridimensional styles, any bag for large machines can be customized.



### LN-7014 ESD PE Bag

ESD PE bag is made by blow molding the mixture of low-density polyethylene (LDPE) + linear low density polyethylene (LLDPR) + antistatic Masterbatch + Color Masterbatch + stabilizing agent, then cutting off and heat sealing. The product features are stable anti-static performance, soft touch feeling, free adjustment of color and thickness, and it is widely used in the printed circuit boards and other electronic products.

Any size can be ordered in open flat, ziplock, and tridimensional styles, any bag for large machines can be customized.



### LN-7015 Conductive Grid Bag

Conductive grid bad is made from anti-static transparent plastic membrane coupled with conductive black printing ink. The surface resistance is below  $10^6 \Omega$ .

Any size can be ordered in open flat, ziplock, and tridimensional styles, any bag for large machines can be customized.



### LN-7016 Conductive Black PE Bag

Conductive PE bag is made by blow molding of mixture of LDPE, anti-cavitation agent and super conductive carbon black. It can protect electric components from electromagnetic and electrostatic damage. The surface resistance is below  $10^6 \Omega$ .

Scope of application: Electronic, military, aviation, network communications, photographic equipment, instruments, meters and other equipments.



### LN-7017 ESD Bubble Bag

Anti-static bubble bag is used for light products and low-demand packaging. It is a mature packaging materials. The air bubbles can prevent products from damage due to collision, friction or electrostatic. Surface resistance values : $10^8$ - $10^{10} \Omega$ .

Materials, specifications and colors can be customized.



### LN-7018 ESD EPE Foam

It is used for light products and low-demand packing. It's a mature packaging material for reducing shock.

The surface resistance is  $10^8$ - $10^{10} \Omega$ .

Materials, specifications and colors can be customized.



### LN-7019 Conductive High density Foam

It is produced by compounding the PE resin with conductive fillers & blowing agents to extrude certain sheets, then cross-linking and foaming. Sheet being molded, the conductive filler forms conductive channel / network internally, so as to achieve the purpose of static leakage.



## ESD PACKING MATERIAL



**LN-7021 Warning Tape**



**LN-7023 Sticky Floor Tape**



**LN-7024 ESD Grid Tape**



**LN-7025 ESD Transparent Tape**



**LN-7026A Warning Label**



**LN-7026B Warning Label**



**LN-7027A Kapton Tape**



**LN-7027B ESD Kapton Tape**

## Blister packaging

Material		PVC, PP, PS, PE, HIPS and so on
Mold type	Gypsum mold	The surface is not smooth and fragile, not durable. It is often used for design proofing.
	Copper mold	The surface smooth and durable, low cost advantages, electroplating copper is the most commonly used mold.
	Aluminum mold	CNC machined Aluminum mold. It is the perfect precision, smooth and durable, but also high cost. Aluminum mold is for high precision demand products, or for mass production.
Used for electric components, food, hardware, toy and so on.		

Sample Products:





# PP CORRUGATED SHEET

## PP CORRUGATED SHEET

SHEET THICKNESS: 2mm, 3mm, 4mm, 5mm

COLOR: Black, grey, green, blue, white, red  
only black color can be conductive.

SURFACE RESISTANCE:

Anti-static: 10E6-10E11 ohm

Conductive: 10E4-10E6 ohm

ADVANTAGE: Any size can be ordered.

We could customize any design as request.



**PP Corrugated Sheet**



**Corrugated Divider**

## FLEXIBLE, ECONOMIC



**LN3301 Conductive Corrugated Box**



**LN3302 ESD Corrugated Box**



**LN3303A Normal Corrugated Box**



**LN3303B Normal Corrugated Box**



**Corrugated Box with cover**



**Conductive Corrugated Divider**



**Conductive Plastic Corner**



**Plastic Side Frame**



**Metal Handle**

# ESD CONTAINER, TRAY

## ESD CONTAINER, TRAY

### DESCRIPTION:

- 1) Molding Injection
- 2) Material: PP compound
- 3) Usage: to store electronics components, PCBs, and transportation
- 4) Surface resistance: below 10E6 ohms
- 5) ESD corrugated divider can be matched inside.
- 6) Corrugated cover or molded cover is available to prevent dust.
- 7) It can print LOGO, make stack.

We offer many models to accommodate all your needs.

ESD BIN BOX					
Model	Ext.dim.(mm)	Int.dim.(mm)	Model	Ext.dim.(mm)	Int.dim.(mm)
LN-2101	155x100x55	135x85x50	LN-2103	255x175x75	220x160x70
LN-2102	205x135x65	180x120x60	LN-2104	300x205x90	270x185x80
ESD TOTE BOX					
Model	Ext.dim.(mm)	Int.dim.(mm)	Model	Ext.dim.(mm)	Int.dim.(mm)
LN-2105	360x270x135	320x240x125	LN-2125	600x500x167	560x460x160
LN-2106	380x240x105	340x220x90	*LN-2127	580x370x200	535x344x193
LN-2107	420x310x155	380x280x145	*LN-2128	580x370x160	535x344x152
*LN-2109	500x360x175	440x330x165	*LN-2129	615x425x155	585x390x145
*LN-2110	565x420x240	510x390x235	*LN-2130	628x425x320	580x385x310
*LN-2111	565x420x300	510x390x290	LN-2131	720x450x180	680x420x175
*LN-2112	600x500x150	560x455x140	LN-2132	720x560x380	675x515x370
*LN-2113	600x500x300	560x455x290	LN-2136	560x430x145	515x350x140
*LN-2114	610x500x360	560x460x355	LN-2137	585x405x175	538x360x170
LN-2115	670x410x160	620x370x150	LN-2138	530x370x205	490x330x200
*LN-2116	565x420x380	510x390x375	*LN-2139	620x430x200	580x385x195
*LN-2119	610x500x400	560x455x395	*LN-2149	620x430x250	580x395x243
*LN-2120	610x415x245	580x380x240	LN-2150	510x345x185	464x300x175

CONDUCTIVE TRAY					
Model	Ext.dim.(mm)	Int.dim.(mm)	Model	Ext.dim.(mm)	Int.dim.(mm)
LN-2108	450x300x60	430x280x50	LN-2126	315x230x43	300x215x37
LN-2108A	450x300x45	430x280x38	LN-2133	480x328x42	445x292x35
LN-2118	440x290x50	400x265x45	LN-2135	615x420x95	570x370x90
LN-2121	375x250x65	345x225x60	LN-2140	226x166x29	214x154x25
LN-2122	440x295x80	410x265x75	LN-2141	289x195x26	274x183x23
LN-2123	560x375x75	525x330x70	LN-2142	315x290x29	136x58x20

Cover (Lid)	
Model	Size(mm)
LN-2168	610x505x15
LN-2169	566x427x15
LN-2170	585x375x30
LN-2171	630x437x16
LN-2172	484x357x14



**LN-2127 ESD Tote Box**



**ESD Bin Box**



**LN-2114 ESD Tote Box**



**LN-2136 ESD Tote Box**



**LN-2113 ESD Tote Box**

Notes: \* cover is available.

## ESD Circulation Box

Model	Ext.dim.(mm)	Int.dim.(mm)	Model	Ext.dim.(mm)	Int.dim.(mm)
LN-6409	600x400x90	563x365x80	LN-6422	600x400x230	563x365x220
LN-6411	600x400x110	563x365x105	LN-6425	600x400x255	563x365x235
LN-6413	600x400x135	563x365x125	LN-6429	600x400x290	563x365x280
LN-6415	600x400x150	563x365x135	LN-6433	600x400x330	563x365x320
LN-6417	600x400x175	563x365x160	-	-	-



LN-6422

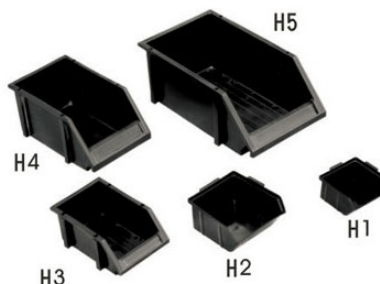
Notes: cover is available

## ESD Component Box

Model	Contour Size	Inner Size	Type
No.1	95x105x50mm	80x95x40mm	Hanging-style
No.2	130x125x65mm	110x105x55mm	Hanging-style
No.3	165x95x70mm	148x86x60mm	Hanging-style
No.4	175x105x80mm	158x95x70mm	Hanging-style
No.5	200x130x90mm	180x113x80mm	Hanging-style
No.6	233x159x120mm	215x140x112mm	Hanging-style



Model	Box Size
H1	104x104x49mm
H2	140x122x68mm
H3	180x121x79mm
H4	253x155x125mm
H5	352x201x143mm



## Group of Vertical Detail Cells

Model	Ext.dim.(mm)	Int.dim.(mm)	Cant Height (mm)	Support Height (mm)	wgt. (kg)	Volume (L)	Load /cell(kg)	Stacking Load(kg)	Quantity of Package (cell/box)
A1811	180x110x80	155x85x75	45	35	0.12	0.5	3	30	80
A2515	250x120x125	220x125x120	65	35	0.33	1.7	10	100	40
A3520	350x200x155	305x170x150	80	50	0.65	3.9	15	150	20
A4520	450x200x180	405x165x170	100	50	0.96	6.4	20	200	12
A4530	450x300x180	405x270x170	100	50	1.18	9.8	25	250	8

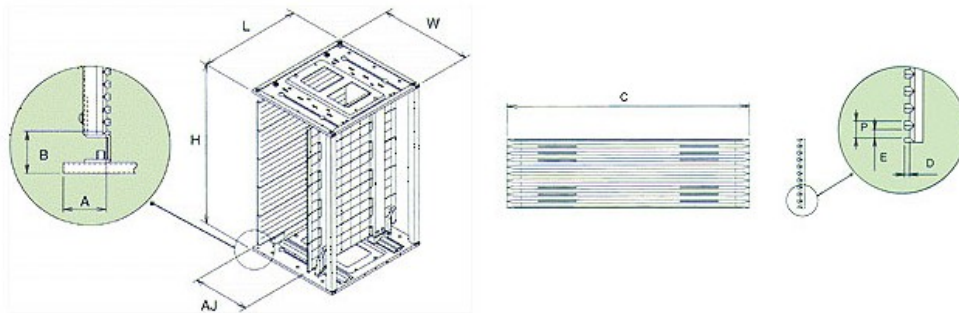


Group of Vertical Detail Cells

# SMT PCB MAGAZINE RACK

## SMT PCB MAGAZINE RACK

- Smooth-Width adjustment using our patented rack & pinion system.
  - ESD Safe plastic card guides, 50 slots.
  - Heat-resistant card guides for board temperature up to 200°C.
  - Compatible with all brands of equipment.
- \*Leenol Rack is RoHS compliance.



Model No.	#1 Base	#2 AJ Method	#3 Temp.	Outer Dimension				Card Guide				Ref.		PCB Slots	Weight(kg)
				L	W	H	AJ	C	D	E	P	A	B		
LN-A801	P	Screw Adjust.	80°C	355	315	580	50-250	353	3.2	7	10	34	34	50	5
LN-A802	P	Screw Adjust.	80°C	355	315	305	50-250	353	3.2	7	10	34	34	25	3.4
LN-B803	M	Screw/Gear	80°C	355	320	563	50-255	353	3.0	5	10	34	34	50	6
LN-B803HT	M	Screw/Gear	120°C	355	320	563	50-255	353	3.0	5	10	34	34	50	6
LN-B083HT200	M	Screw/Gear	200°C	355	320	563	50-255	353	3.0	5	10	34	34	50	6
LN-B804	P	Screw/Gear	80°C	355	320	563	50-255	353	3.0	5	10	34	34	50	4.5
LN-B804HT	P	Screw/Gear	120°C	355	320	563	50-255	353	3.0	5	10	34	34	50	4.5
LN-B805	M	Screw/Gear	80°C	355	320	563	50-255	353	3.0	5	10	34	34	50	7.5
LN-B805HT	M	Screw/Gear	120°C	355	320	563	50-255	353	3.0	5	10	34	34	50	7.5
LN-B806	P	Screw/Gear	80°C	355	320	563	50-255	353	3.0	5	10	34	34	50	6.5
LN-B806HT	P	Screw/Gear	120°C	355	320	563	50-255	353	3.0	5	10	34	34	50	6.5
LN-C807	M	Gear Track	80°C	460	400	565	70-330	460	4.0	5	10	35	35	50	8.8
LN-C807HT	M	Gear Track	120°C	460	400	565	70-330	460	4.0	5	10	35	35	50	8.8
LN-D808	M	Screw/Gear	80°C	535	460	570	50-400	530	4.0	7	10	34	41	50	10.5
LN-D808HT	M	Screw/Gear	120°C	535	460	570	50-400	530	4.0	7	10	34	41	50	10.5
LN-E809	M	Gear Track	80°C	535	530	570	70-460	530	4.0	5	10	34	34	50	12.3
LN-E809HT	M	Gear Track	120°C	535	530	570	70-460	530	4.0	5	10	34	34	50	12.3
LN-B811	P	Chain Track	80°C	355	320	570	50-250	353	4.0	5	10	34	34	50	6

#1: "M" designates "Metal Base". "P" designates "Plastic Base"

#2: "AJ" designates the method of adjusting the width using a screw or with gear adjust system.

## SMT PCB MAGAZINE RACK



### LN-A801 SMT MAGAZINE RACK

Surface Resistance:  $10^4 - 10^6 \Omega$

Contour Size (L×W×H)mm: 355×315×580

51pcs of Plates can be stored

The specification of PCB plates: 350×(80—250)mm

Guide slot of side plate: Depth 3mm, Width 7mm, Pitch 10mm

Top and bottom Base is plastic base.

Fix method: screw adjustable

Weight: 5.0KG

LN-A802

355×315×305mm size magazine rack is available



### LN-B803 SMT MAGAZINE RACK

Surface Resistance:  $10^4 - 10^6 \Omega$

Contour Size(L×W×H)mm: 355×320×565

50pcs of Plates can be stored

The specification of PCB plates: 350×(50—250)mm

Guide slot of side plate: Depth 3mm, Width 5mm, Pitch 10mm

Top and bottom Base is metal base.

Fix method: handle adjustable

Side plate: five pieces assembled

Weight: 6.0KG



### LN-B804 SMT MAGAZINE RACK

Surface Resistance:  $10^4 - 10^6 \Omega$

Contour Size(L×W×H)mm: 355×320×565

50pcs of Plates can be stored

The specification of PCB plates: 350×(50—250)mm

Guide slot of side plate: Depth 3mm, Width 5mm, Pitch 10mm

Top and bottom Base is plastic base.

Fix method: handle adjustable

Side plate: five pieces assembled

Weight: 4.5KG



## SMT PCB MAGAZINE RACK



### LN-B805 SMT MAGAZINE RACK

Surface Resistance:  $10^4 - 10^6 \Omega$

Contour Size(L×W×H)mm: 355×320×565

50pcs of Plates can be stored

The specification of PCB plates: 350×(50—250)mm

Guide slot of side plate: Depth 3mm, Width 5mm, Pitch 10mm

Top and bottom Base is metal base.

Fix method: handle adjustable

Side plate: whole plates

Weight: 7.5KG



### LN-B806 SMT MAGAZINE RACK

Surface Resistance:  $10^4 - 10^6 \Omega$

Contour Size(L×W×H)mm: 355×320×565

50pcs of Plates can be stored

The specification of PCB plates: 350×(50—250)mm

Guide slot of side plate: Depth 3mm, Width 5mm, Pitch 10mm

Top and bottom Base is plastic base.

Fix method: handle adjustable

Side plate: whole plates

Weight: 6.5KG



### LN-C807 SMT MAGAZINE RACK

Surface Resistance:  $10^4 - 10^6 \Omega$

Contour Size(L×W×H)mm: 460×400×565

50pcs of Plates can be stored

The specification of PCB plates: 460×(50—330)mm

Guide slot of side plate: Depth 3mm, Width 5mm, Pitch 10mm

Top and bottom Base is metal base.

Fix method: handle adjustable

Side plate: five pieces assembled

Weight: 8.8KG

## SMT PCB MAGAZINE RACK



### LN-D808 SMT MAGAZINE RACK

Surface Resistance:  $10^4 - 10^6 \Omega$

Contour Size(L×W×H)mm: 535×460×570

50pcs of Plates can be stored

The specification of PCB plates: 460×(50—380)mm

Guide slot of side plate: Depth 3mm, Width 7mm, Pitch 10mm

Top and bottom Base is metal base.

Fix method: handle adjustable

Side plate: five/two pieces assembled

Weight: 10.5KG



### LN-E809 SMT MAGAZINE RACK

Surface Resistance:  $10^4 - 10^6 \Omega$

Contour Size(L×W×H)mm: 535×530×570

50pcs of Plates can be stored

The specification of PCB plates: 530×(50—460)mm

Guide slot of side plate: Depth 3mm, Width 5mm, Pitch 10mm

Top and bottom Base is metal base.

Fix method: handle adjustable

Side plate: five pieces assembled

Weight: 12.3KG



### LN-B811 SMT MAGAZINE RACK

Surface Resistance:  $10^4 - 10^6 \Omega$

Contour Size(L×W×H)mm: 355×320×570

50pcs of Plates can be stored

The specification of PCB plates: 350×(50—250)mm

Guide slot of side plate: Depth 3mm, Width 5mm, Pitch 10mm

Top and bottom Base is plastic base.

Fix method: chain adjustable (Four chains can be conveyed at the same time ,It is accurate and efficient to adjust. close conveniently and freely)

Side plate: whole plate

Weight: 5.6KG



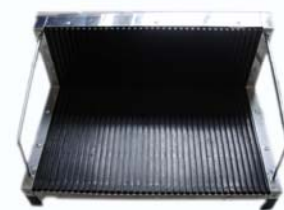
### LN-C03 Conductive Component Box

Surface Resistance:  $10^5-10^8 \Omega$   
 Contour Size: 138x93x46mm  
 Interior Size: 127x87x42mm  
 Shape: Combination, drawer type



### Insert-rack

Surface Resistance:  $10^5-10^8 \Omega$   
 Contour Size: 100x15x14mm  
 Width: 2.0mm  
 Can supply a variety of equipment and products for ESD production line



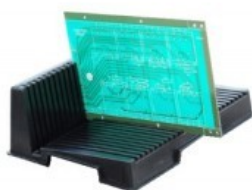
### LN-D01 Anti-static Circulation Rack

Contour Size: (LxWxH)  
 410x280x165mm  
 Use Slot Size: (LxH) 225x140mm  
 It can put 38pcs pcbs.



### LN-D02 Anti-static Circulation Rack

Contour Size: (LxWxH)  
 480x140x35mm  
 25 pcs of PCB plates can be stored  
 Shape: Rectangle, Two-sided may use.



### LN-D03 Anti-static Circulation Rack

Contour Size: (LxWxH)  
 265x205x95mm  
 Use Slot Size: (LxH) 155x75mm  
 25 pcs of PCB plates can be stored



### LN-D04 Anti-static Circulation Rack

Contour Size: (LxWxH)  
 410x140x22mm/410x280x22mm  
 Slot (WxH) 2.8x5mm Spacing: 10mm  
 42 pcs of PCB plates can be stored



### LN-D05 Anti-static Circulation Rack

Contour Size: (LxWxH)  
 437x160x30mm  
 Slot (WxH) 3x7mm Spacing: 16mm  
 5 pcs of PCB plates can be stored



### LN-D07 Anti-static Circulation Rack

Contour Size: (LxWxH)  
 485x175x50mm  
 Slot : 3x7mm Slot: 2.2x4mm  
 Spacing: 16mm  
 25 pcs of PCB plates can be stored



### LN-D08 Anti-static Circulation Rack

Contour Size: (LxWxH)  
 1200x1000x145mm  
 Surface Resistance:  $10^8-10^{11} \Omega$   
 Material: HDPE/PP  
 Active Carrying: 800kgs  
 Stable Carrying: 2000kgs

## ESD WIRE SHELF AND TROLLEY

---

### ESD WIRE SHELF AND TROLLEY

#### LN-608 ESD STORAGE

#### Raw Material

**Carbon Steel:** Q195-F#

**Stainless Steel:** 202# or 304#

#### Wire Diameter

**A:**  $\Phi 4.0\text{mm}$  ~  $\Phi 7.0\text{mm}$ , Normal Dia.:  $\Phi 6.0\text{mm}$

**B:**  $\Phi 4.0\text{mm}$  ~  $\Phi 7.0\text{mm}$ , Normal Dia.:  $\Phi 6.0\text{mm}$

**C:**  $\Phi 2.5\text{mm}$  ~  $\Phi 4.7\text{mm}$ , Normal Dia.:  $\Phi 3.0\text{mm}$

**D:**  $\Phi 3.0\text{mm}$  ~  $\Phi 6.0\text{mm}$ , Normal Dia.:  $\Phi 4.2\text{mm}$



#### Shelves Collars Type

#### Coniform Collars

**Dimension:**  $\Phi 19.1\text{mm}$ ,  $\Phi 22\text{mm}$ ,  $\Phi 25.4\text{mm}$ ,  $\Phi 38.1\text{mm}$

This high quality Chrome Wire shelving system is a tried and tested product, lending itself to endless and imaginative applications in all commercial areas, where strength, style and elegance are required.



# ESD WIRE SHELF AND TROLLEY

## DATA SHEET

Width(mm)	Length(mm)	Chrome-plated Wire Shelves	Weight(kg)	Stainless Steel Wire Shelves	Weight(kg)
350	600	C 1424	2.7	S 1424	2.9
	750	C 1430	3.2	S 1430	3.5
	900	C 1436	3.6	S 1436	3.9
	1050	C 1442	4.3	S 1442	4.7
	1200	C 1448	4.7	S 1448	5.1
	1500	C 1460	6.3	S 1460	6.9
	1800	C 1472	7.7	S 1472	8.2
450	600	C 1824	3.2	S 1824	3.5
	750	C 1830	3.6	S 1830	3.9
	900	C 1836	4.3	S 1836	4.3
	1050	C 1842	5.0	S 1842	5.5
	1200	C 1848	5.4	S 1848	5.9
	1500	C 1860	7.7	S 1860	8.4
	1800	C 1872	9.1	S 1872	9.9
530	600	C 2124	3.6	S 2124	3.9
	750	C 2130	4.1	S 2130	4.5
	900	C 2136	5	S 2136	5.5
	1050	C 2142	5.4	S 2142	5.9
	1200	C 2148	6.4	S 2148	7
	1500	C 2160	8.2	S 2160	8.9
	1800	C 2172	10.9	S 2172	11.9
600	600	C 2424	4.1	S 2424	4.5
	750	C 2430	5	S 2430	5.5
	900	C 2436	5.9	S 2436	6.4
	1050	C 2442	6.8	S 2442	7.4
	1200	C 2448	7.3	S 2448	8
	1500	C 2460	9.5	S 2460	10.4
	1800	C 2472	11.8	S 2472	12.9
750	900	C 3036	6.8	-	-
	1200	C 3048	9.5	-	-
	1500	C 3060	11.8	-	-
	1800	C 3072	14	-	-



## ESD WIRE SHELF AND TROLLEY

### LN-606A ESD GRADIENT TROLLEY



Width(mm)	Length(mm)	Trolley handle Height(mm)
450	600	900
	900	900
	1050	900
	1200	900
600	600	900
	750	900
	1050	900
	1200	900

### LN-609 SMT REEL TROLLEY



Item	Size(mm)	Line Space(mm)
Single Peak	450x900	60
	450x1200	60
	450x1500	60
Double Peak	450x900	20
	450x1200	20
	450x1500	20

### LN-610 ESD TROLLEY FOR TRAYS



IT CAN BE CUSTOMIZED ACCORDING TO CUSTOMER REQUEST.

# PCB TROLLEY, CART

## ESD PCB TROLLEY, CART



### LN-601 ESD Dolly

Dolly size: 660x480x145mm / 710x520x150mm

Max. Load: 200kg

Weight: 5.2kg

Surface resistance: 10e4-10e7 ohms



### LN-602 ESD Dolly

Any specifications can be ordered.

Max. Load: 100kg

Surface resistance: 10e4-10e7 ohms

Dolly for magazine rack, esd plastic containers



### LN-603A ESD PCB Trolley

Size: 900x550x1300mm

Each board has 100pcs slots.

Slot width: 5mm, Pitch: 10mm

Adding more double flashboards to put more PCBs

Surface resistance: below 10e6 ohm

Flashboard width: 350mm, 460mm



### LN-603B ESD PCB Trolley

Size: 900x550x1370mm

Each board has 100pcs slots.

Slot width: 5mm, Pitch: 10mm

Adding more double flashboards to put more PCBs

Surface resistance: below 10e6 ohm

Flashboard width: 350mm, 460mm



### LN-604 ESD S/S PCB Trolley

Size: 950x675x1300mm

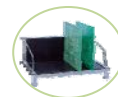
Each board has 60pcs slots. It can insert 120pcs PCBs through 2 directions. Inserting depth: 225mm

Slot width: 5mm, Pitch: 19mm, Slot depth: 5mm

Adding more double flashboards to put more PCBs

Surface resistance: below 10E6 ohm

Flashboard width: 350mm, 460mm



### LN-605 ESD Hanging Trolley

Size: 1050x540x1400mm

It can put max.24pcs L type circulation rack.

Surface resistance: 10e6-10e11ohms


L type circulation rack also supplied.

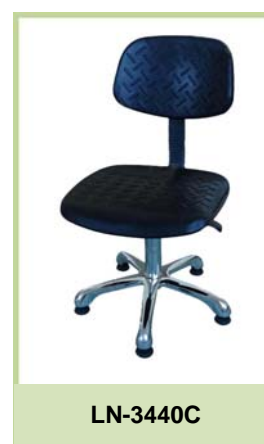
# ESD CHAIR

Model	Surface size	Adjust. Height	Five-star feet	Chair castor	Chassis	System Resistance	Lift Model
LN-2110A	Dia.:325mm, Thickness:35-40mm	450-600mm	Chrome plated, R=240mm	High strength durable nylon castor	Steel plating	10 <sup>6</sup> -10 <sup>9</sup> Ω	High-class gas lift
LN-2120A	Dia.:325mm, Thickness:35-40mm	450-600mm	Chrome plated with footrest circle, R=220mm	High strength durable nylon castor			
LN-2140C	Dia.:325mm, Thickness:35-40mm	450-600mm	one-time forming plated, R=240mm	High strength durable nylon fixed feet			
LN-2111A	Dia.:325mm, Thickness:35-40mm	650-850mm	Chrome plated, R=240mm Footrest Circle: Stainless steel Circle, plastic cross	High strength durable nylon castor			
LN-2210C	Dia.:335mm, Thickness:35-40mm	420-570mm	Chrome plated, R=240mm	High strength durable nylon fixed feet			
LN-2240A	Dia.:335mm, Thickness:35-40mm	420-570mm	one-time forming plated, R=240mm	High strength durable nylon castor			
LN-2250C	Dia.:335mm, Thickness:35-40mm	390-540mm	Alum. Alloy Die-casting R=240mm	High strength durable nylon fixed feet			
LN-2310A	Size:300x350mm, Thickness:40mm	450-600mm	Chrome plated, R=240mm	High strength durable nylon castor			
LN-2340C	Size:300x350mm, Thickness:40mm	430-580mm	one-time forming plated, R=240mm	High strength durable nylon fixed feet			
LN-2351A	Size:300x350mm, Thickness:40mm	640-840mm	Alum. Alloy Die-casting R=240mm Footrest Circle: Stainless steel Circle, plastic cross	High strength durable nylon castor			



# ESD CHAIR

Model	Surface size	Adjust. Height	Five-star feet	Chair castor	Chassis	System Resistance	Lift Model
LN-3110A	Seat Size: 380x380mm, Back size: 350x250mm	460-610mm	Chrome plated, R=260mm	High strength durable nylon castor	Steel Board Plating Chassis	10 <sup>6</sup> -10 <sup>9</sup> Ω	High-class gas lift
LN-3140C		430-580mm	one-time forming plated, R=240mm	High strength durable nylon fixed feet			
LN-3160E		420-570mm		Aluminum castor			
LN-3250C		420-580mm		High strength durable nylon fixed feet	Steel Pipe Plating Chassis Connection		
LN-3261C		630-830mm	Alum. Alloy Die-casting, R=320mm Footrest circle: stainless steel circle and plastic cross	High strength durable nylon fixed feet			
LN-3340C		440-590mm	one-time forming plated, R=240mm	High strength durable nylon fixed feet	Steel Board Plating Chassis		
LN-3350B		460-610mm	Alum. Alloy Die-casting, R=240mm	High strength durable nylon double-color castor			
LN-3410A		460-610mm	Chrome plated, R=260mm	High strength durable nylon castor	Steel Pipe Plating Chassis Connection		
LN-3440C		440-590mm	one-time forming plated, R=240mm	High strength durable nylon fixed feet			
LN-3461E		650-850mm	Alum. Alloy Die-casting, R=320mm Footrest circle: stainless steel circle and plastic cross	Aluminum castor			





# ESD CHAIR

Model	Surface size	Adjust. Height	Five-star feet	Chair castor	Chassis	System Resistance	Lift Model
LN-4220A	Dia.:320mm, Thickness:60mm	470-620mm	Chrome plated with footrest circle, R=220mm	High strength durable nylon castor	Steel Plating	10 <sup>6</sup> -10 <sup>9</sup> Ω	High-class gas lift
LN-4320D	Dia.:320mm, Thickness:60mm	470-620mm	Chrome plated with footrest circle, R=220mm	High strength durable nylon flat feet			
LN-4241C	Dia.:320mm, Thickness:60mm	590-850mm	one-time forming plated, R=240mm Footrest Circle: Stainless steel Circle, plastic cross	High strength durable nylon fixed feet			
LN-5110A	Seat Size: 430x400mm, Back size: 400x300mm	460-620mm	Chrome plated, R=260mm	High strength durable nylon castor	Steel Board Plating Chassis Connection		
LN-5130CF	Seat Size: 430x400mm, Back size: 400x300mm	440-580mm	Alum. Alloy Die-casting R=300mm	High strength durable nylon fixed feet			
LN-5210C	Seat Size: 430x400mm, Back size: 400x300mm	440-600mm	Chrome plated, R=260mm	High strength durable nylon fixed feet	Steel Pipe Plating Chassis Connection with dust-free cover		
LN-5360E	Seat Size: 430x400mm, Back size: 400x300mm	440-580mm	Alum. Alloy Die-casting R=320mm	Alum. Alloy Castor	Steel Board Plating Chassis Connection		
LN-5450C	Seat Size: 430x400mm, Back size: 400x300mm	420-570mm	Alum. Alloy Die-casting R=240mm	High strength durable nylon fixed feet	Steel Pipe Plating Chassis Connection with dust-free cover		
LN-5261B	Seat Size: 430x400mm, Back size: 400x300mm	660-860mm	Alum. Alloy Die-casting, R=320mm Footrest Circle: Stainless steel Circle, plastic cross	High strength durable nylon double-color castor	Steel Pipe Plating Chassis Connection with dust-free cover		
LN-5361C	Seat Size: 430x400mm, Back size: 400x300mm	630-830mm	Alum. Alloy Die-casting, R=320mm Footrest Circle: Stainless steel Circle, plastic cross	High strength durable nylon fixed feet	Steel Board Plating Chassis Connection		







**LN-3861A ESD PU Foaming Chair**

Seat Size: 440x420mm, Back size: 380x320mm

Color: Black

Chassis: Steel Board Plating Chassis Connection



Five star feet: Alum. Alloy Die-casting R=320mm

Footrest Circle: Stainless steel Circle, plastic cross

Chair castor: High strength durable nylon castor  
With metal conductive chain

**ESD Chair Accessories System**



**Alum. Alloy  
conductive castor**



**Plastic conductive  
castor-black**



**Plastic conductive  
castor-white**



**Alum. Alloy  
conductive foot cup**



**Plastic conductive  
foot cup**



**Adjustable  
pneumatic rod**



**Footrest**



**One-time forming  
plated Five-star feet**



**Alum. Alloy  
conductive foot cup**



**Chrome plated  
with footrest circle**

## ESD Work Bench



Model	Product	Size (mm)
LN18106	Antistatic Table Top	1000x600x25
LN18126	Antistatic Table Top	1200x600x25
LN18156	Antistatic Table Top	1530x600x25
LN18158	Antistatic Table Top	1530x750x25
LN18159	Antistatic Table Top	1530x900x25
LN18188	Antistatic Table Top	1830x750x25
LN18189	Antistatic Table Top	1830x900x25
LN28108	Fire Board Table Top	1000x750x50
LN28158	Fire Board Table Top	1530x750x50
LN28188	Fire Board Table Top	1830x750x50
LN28208	Fire Board Table Top	2000x750x50



**Fixed ESD Table Bench**



**Adjustable ESD Table Bench**



**Cabinet ESD Table Bench**



**Heavy ESD Table Bench**



**Mobile ESD Table Bench**



**ESD Industrial Trolley**

# MOISTURE-PROOF CABINET

## Leenol Digital Dry Cabinet

Model	Standard Humidity	Contour Size (W x H x D) mm	Interior Size (W x H x D) mm	Volume	High load Steel Shelf
HDEN-157	25~61% Rh adjustable	450x950x452	448x869x425	165L	3pcs
HDEN-290	25~60% Rh adjustable	600x632x672	598x524x645	202L	2pcs
HDEN-315	25~59% Rh adjustable	905x1045x452	903x869x425	334L	3pcs
HDEN-490	25~58% Rh adjustable	600x1274x672	598x1071x645	413L	3pcs
HDEN-575	25~57% Rh adjustable	905x1045x800	903x869x773	607L	3pcs
HDEN-790	25~56% Rh adjustable	600x1820x672	598x1618x645	624L	5pcs
HDEN-1490	25~55% Rh adjustable	1200x1820x672	1198x1618x645	1250L	5pcs

Property: HDEN: 25~55% Rh

HDEN-A: 10-20% Rh (Auto)

HDEN-AL: 1-10% Rh (Auto)

Usage: for storing precision electronics components, wafer, microscope, large meter, PCBs, etc.



HDEN-157



HDEN-209



HDEN-315



HDEN-490



HDEN-575



HDEN-790



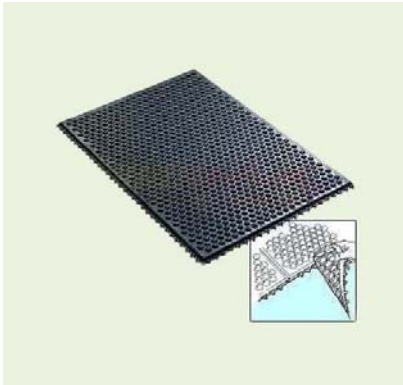
HDEN-1490-4



HDEN-1490-6

## FLOOR MAT, TABLE MAT

### Anti-fatigue Mat



#### LN-950 Anti-fatigue Mat

Pass the class 1000 cleanroom test, comply to Rohs Standard.  
 Good Natural Rubber, comfortable, durable anti-fatigue mat.  
 Size(mm): 610x450x15, Weight: 2kg  
 Surface resistance: RTT 1x10E3-10E5 ohms.  
 Patented locked design, each piece mat can lock together or separate.  
 Patented ventilated design, not easy to be funkyd  
 Special Slip-proof design, not easy to slide.



#### LN-930 Anti-fatigue Mat

Comply to Rohs standard, rubber material  
 Size A(mm): 610x910x12.5 Weight: 3kg  
 Size B(mm): 610x450x12.5 Weight: 1.8kg  
 Surface resistance: RTT 1x10E8-10E9 ohms.



#### LN-418S Anti-fatigue Mat

2 layers structure, surface is PVC, bottom layer is carbamic resin  
 Size(mm): 610x910x17, other size can be customized.  
 Surface resistance: RTT 1x10E8-10E9 ohms  
 Fit for electronic components manufacturers and static sensitive area.



#### LN-418E Anti-fatigue Mat

3 layers structure, surface is pvc, middle layer is carbamic resin, bottom layer is conductive rubber.  
 Size(mm): 610x910x18, 610x450x18, other size can be customized.  
 Surface resistance: RTT 1x10E8-10E9 ohms  
 Fit for electronic components manufacturers and static sensitive area.

# FLOOR MAT, TABLE MAT



## LN-418B Anti-fatigue Mat



3 layers structure, surface is pvc, middle layer is EPDM foam, bottom layer is conductive rubber.

Size(mm): 610x910x20, 610x450x20, other size can be customized.

Surface resistance: RTT  $1 \times 10^{E8-10E9}$  ohms

Fit for electronic components manufacturers and static sensitive area.

Model	Size(mm)	Material	Surface Resistance	Ground Resistance	Anti-fatigue Effect	Note
LN-950	610x460x15	Good Natural Rubber	$<10^7$ ohm	$<10^7$ ohm	Best	
LN-930	610x910x12.5 610x450x12.5	Rubber Material	$10^8-10^9$ ohm	$10^8-10^9$ ohm	Good	Low cost design
LN-418S	610x910x17	2 layers: PVC+ Carbamic resin	$10^8-10^9$ ohm	$10^9-10^{10}$ ohm	Better	
LN-418E	610x910x18 610x450x18	3 layers: PVC + Carbamic resin + Conductive rubber.	$10^8-10^9$ ohm	$10^9-10^{10}$ ohm	Better	
LN-418B	610x910x20	3 layers: PVC + EPDM + Conductive rubber.	$10^8-10^9$ ohm	$10^9-10^{10}$ ohm	Better	Low cost design

Notes:

Size can be customized.

Biggest size: LN-418S: 1200mmx10000mm

LN-418E & LN-418B: 1200mmx1200mm

## LN-950 locked picture







## LN95 Sticky Mat

Film Material: Low density PE  
Bond Material: water-soluble acrylic acid  
Layer thickness: 50µm/40µm  
Tensile Strength: >1.2kg/cm<sup>2</sup>  
Layer qty: 30layers/set  
Stickiness: Low / Midd. / High  
Color: Blue/white  
Package: 30layers/set, 10sets/box, 5box/ctn  
Size: 18"x36", 18"x45", 24"x36" , 26"x45"



## LN-96 Sticky Pen

Excellent dust sticky performance  
Sticky Silicon Pen  
Size: 5mm, 8mm



## LN-97 ESD Table Mat

Thickness: 2mm, 3mm  
Width: 0.6m, 0.9m, 1m, 1.2m  
Length: 10m  
Color: blue / green / grey  
Upper layer resistance: 10E8-10E10 ohm  
Under layer resistance: 10E4-10E6 ohm  
High temperature endurable type available.

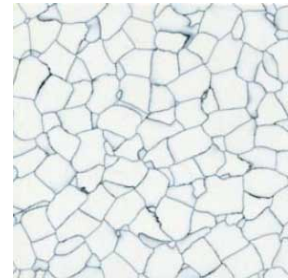
# ESD PVC FLOOR

## ESD PVC Floor

- 1) Size: 600mm×600mm, 610mm×610mm, 900mm×900mm
- 2) Thickness: 2.0mm/2.5mm/3.0mm
- 3) System Resistance: 2.5×10E4-10E6 ohm (Conductive)  
10E6-10E8 ohm (Anti-static)

Note: Color is fixed according to samples.

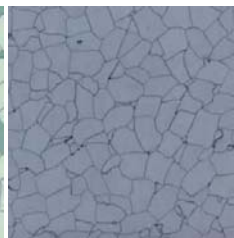
The main material is PVC resin, which is made with special process. The conductive or anti-static network between PVC particles makes PVC floor anti-static or conductive permanently. The surface seems like marble, which has very good decoration effects. It is widely used for telecom, electronic industries, cell-type machine room, PC room and cleanroom workshops, etc, which have purification and anti-static request.



**LN-01**



**LN-02**



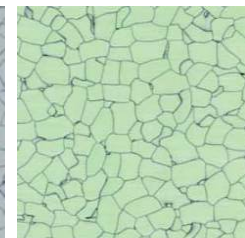
**LN-03**



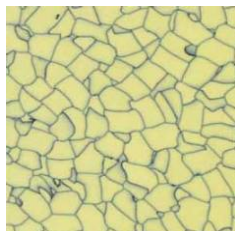
**LN-04**



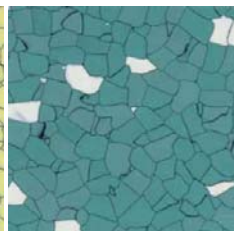
**LN-06**



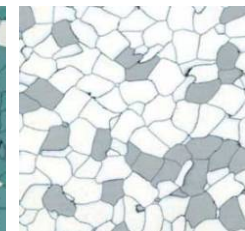
**LN-901**



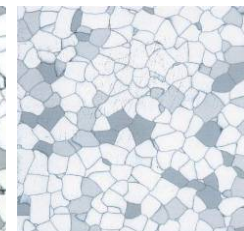
**LN-903**



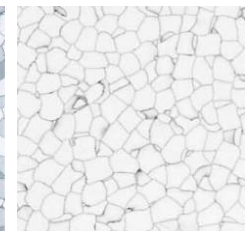
**LN-906**



**LN-909**



**LN-1101**



**LN-1103**



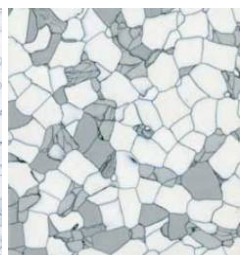
**LN-1105**



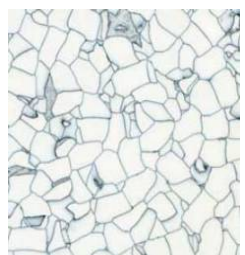
**LN-1106**



**LN-1108**



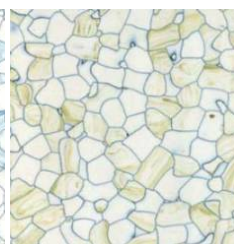
**LN-9021**



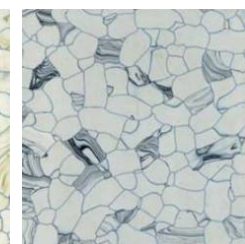
**LN-9022**



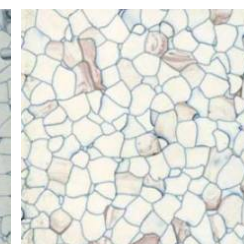
**LN-9023**



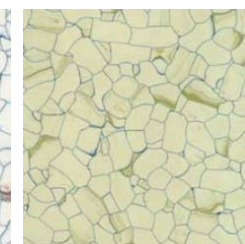
**LN-9025**



**LN-9026**



**LN-9027**



**LN-9028**

# CLEANROOM PRODUCT

## ESD Clothes

### LN-101 ESD Garment

Material: 100% polyester with conductive fiber

Size: S, M, L, XL, 2XL



Size	Length	Circum. (Chest)	Sleeve	Shoulder Width	Suitable Height
S	87	109	54	44	156-162
M	90	113	57	46	162-168
L	93	117	60	48	168-174
XL	96	121	63	50	174-180
XXL	99	125	66	52	180-186

### LN-102 ESD TC Garment

Material: 65% polyester, 35% cotton with conductive fiber

Size: S, M, L, XL, 2XL



Size	Length	Circum. (Chest)	Sleeve	Shoulder Width	Suitable Height
S	87	109	54	44	156-162
M	90	113	57	46	162-168
L	93	117	60	48	168-174
XL	96	121	63	50	174-180
XXL	99	125	66	52	180-186

### LN-103 ESD Stand Collar Smock

Material: 100% polyester with conductive fiber

Size: S, M, L, XL, 2XL



Size	Length	Circum (Chest)	Sleeve	Shoulder Width	Trousers Length	Suitable Height
S	63	102	54	44	95	156-162
M	66	106	57	46	98	162-168
L	69	110	60	48	101	168-174
XL	72	114	63	50	104	174-180
XXL	74	118	66	52	106	180-186

# CLEANROOM PRODUCT

## LN-104 ESD Working Uniform

Material: 65% polyester, 35% cotton with conductive fiber

Size: S, M, L, XL, 2XL



Size	Length	Circum (Chest)	Sleeve	Shoulder Width	Trousers Length	Suitable Height
S	63	102	54	44	95	156-162
M	66	106	57	46	98	162-168
L	69	110	60	48	101	168-174
XL	72	114	63	50	104	174-180
XXL	74	118	66	52	106	180-186

## LN-105 ESD Overcoat

Composition: 99% polyester and 1% conductive fiber

Weave: 1/2 twill, 3/2 twill

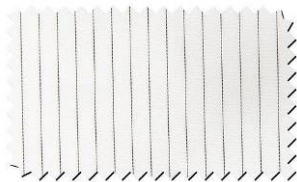
Yarn type: 100D, 75D

0.5 strip, 0.5 grip and 0.25 grip

White, blue and pink colors are available



Size	Length	Circum. (Chest)	Sleeve	Shoulder Width	Suitable Height
S	147	110	96	78	156-162
M	151	114	100	80	162-168
L	155	118	104	82	168-174
XL	160	122	108	84	174-180
XXL	165	126	112	86	180-186



**TC fabric-white**

Material: Made of 65% polyester and 35% cotton, with conductive fiber by 1cm distance.



**Anti-static fabric**

Material: 100% polyester with conductive fiber Type: Grid 5mm and 2.5mm type Strip 5mm and 2.5mm type Surface resistance: 10E4-10E9 ohm



ESD Cap



LN-301



LN-302



LN-303



LN-304



LN-305



LN-306



LN-307



LN-308



LN-309



LN-310



LN-311



LN-312



LN-313



LN-314



LN-315



LN-316



# CLEANROOM PRODUCT

## ESD Shoes

Wearing antistatic shoes is the most efficient and safest method to discharge the body static, and it can also prevent dust generation.

Our ESD shoes are made of PVC,PU,SPU and Cloth. They are comfortable, light, anti-slip, antistatic.

Size: 22.5cm-28cm



## CLEANROOM PRODUCT

---

### ESD Gloves



**LN-8001 ESD Glove**



**LN-8002 ESD Lint free  
dotted Glove**



**LN-8003 Carbon glove**



**LN-8003F Carbon top fit  
PU glove**



**LN-8003P Carbon Palm fit  
PU glove**



**LN-8004 Copper  
Fiber Glove**



**LN-8004F Copper top  
fit PU glove**



**LN-8004P Copper  
top fit PU glove**



**LN-8005 Nylon glove**



**LN-8005F Nylon top  
fit PU glove**



**LN-8005P Nylon  
palm fit PU glove**



**LN-8006 Foam  
nitrile coating**

# CLEANROOM PRODUCT

---



**LN-8007 Clean Glove**



**LN-8008 Latex Glove**



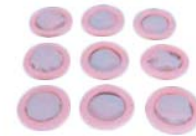
**LN-8009 Clean PVC Glove**



**LN-8010 Nitrile Glove**



**LN-8101 Finger cot**



**LN-8102 Finger cot**



**LN-8103 Finger cot**



**LN-8104 Finger cot**



**LN-8105 Finger cot**



**ESD Shoe Cover**



**Face Mask**



**ESD Alcohol Bottle**



**Clean Room Wiper**



**M-1000  
Tape Dispenser**



**Vacuum Cleaner**

ESD Wrist Strap



LN1102  
Wired Wrist Strap



LN1107  
High Quality Wrist Strap



LN1109  
Top Quality Wrist Strap



LN1203  
Velcro wrist strap



LN1403  
Metal Wrist Strap



LN1404  
Adjustable Metal Wrist Strap



LN1501  
Wireless Wrist Strap



LN-1601  
Dual Wire Metal Wrist Strap



LN1602  
Dual Wire Fabric Wrist Strap



LN-1701  
ESD Silica Gel Wrist Strap



LN1801  
Floor Mat Grounding Cord



LN1802  
Floor Mat Grounding Lead Kit



LN1803  
Double head Grounding Cord



LN1804  
Dual Bench Grounding Socket



LN1901  
Heel Strap



LN1902  
Disposable Heel Grander

## ESD TOOLS

### ESD Brush

Made of electric-plastic in various shapes and size, ESD Brush are used to clean various components without hurt or damage to them.

Surface Resistance:  $10^5 - 10^9 \Omega$ .





ESD Tweezers

 <b>00-SA</b>	 <b>2A-SA</b>	 <b>2-SA</b>	 <b>3C-SA</b>
 <b>3-SA</b>	 <b>5A-SA</b>	 <b>5B-SA</b>	 <b>7-SA</b>
 <b>34A-SA</b>	 <b>90A-SA</b>	 <b>AA-SA</b>	 <b>ESD-7A</b>
 <b>ESD-10</b>	 <b>ESD-13</b>	 <b>ESD-15</b>	 <b>ESD-17</b>
 <b>ESD-249</b>	 <b>ESD-259</b>	 <b>ESD-00</b>	 <b>SS-SA</b>
 <b>ST-10</b>	 <b>ST-11</b>	 <b>ST-12</b>	 <b>ST-13</b>
 <b>ST-14</b>	 <b>ST-15</b>	 <b>ST-16</b>	 <b>ST-17</b>

# ESD TOOLS

## Bench top Ionizing Air Blower LN-S001



Operating Voltage	110v/60Hz or 220V/50Hz
Current Consumption	0.25A or 0.12A
Operating Temperature	0-50°C
Air Coverage	40cm × 60cm
Size	90mm(L) × 170mm(W) × 260mm(H)
Weight	3kg
Air Volume	45~110CFM
Ion Balance	0V ± 10V

## Horizontal Ionizing Air Blower LN-S020



Operating Voltage	110V/60Hz or 220V/50Hz
Current Consumption	3.0A or 1.5A
Operating Temperature	0-50°C
Air Coverage	60cm × 120cm
Size	450mm(L) × 220mm(W) × 190mm(H)
Weight	8kg
Air Volume	70~120CFM
Ion Balance	0V ± 10V

## Overhead Ionizing Air Blowers



**LN-S002**



**LN-S003**



**LN-S1104**

Model	LN-S002	LN-S003	LN-S1104
Operating Voltage	110V/60Hz or 220V/50Hz	110V/60Hz or 220V/50Hz	110V/60Hz or 220V/50Hz
Current Consumption	0.9A or 0.4A	1.25A or 0.62A	1.3A or 0.65A
Operating Temperature	0-50°C	0-50°C	0-50°C
Air Coverage	40cm × 90cm	40cm × 120cm	40cm × 120cm
Size	600mm(L) × 184mm(W) × 110mm(H)	1100mm(L) × 184mm(W) × 110mm(H)	1100mm(L) × 184mm(W) × 110mm(H)
Weight	7.5kg	11.7kg	12kg
Air Volume	80~220CFM	120~330CFM	160~330CFM
Ion Balance	0V ± 10V	0V ± 10V	0V ± 10V

## Ionizing Air Gun LN-S004



Operating Voltage	4.6KV(LN-S007)
Current Consumption	200uA
Operating Temperature	0-50°C
Weight	0.5kg
HV cable length	3meters
Air velocity	40~70psi
Operating air velocity	> 10m/sec



## High Voltage Power Supply LN-S007

Operating Voltage	110V/60Hz or 220V/50Hz
Output Voltage	4.6KV × 2
Output Current	Max. 4.5mA

\* Match LN-S007 High Voltage Power Supply

## ESD TOOLS

### Ionizing Air Bar LN-S040



\* March LN-S009 High Voltage Power Supply

Operating Voltage	7.0KV(LN-S009)
Current Consumption	0.4uA
Operating Temperature	22-25°C
HV cable length	3Meters
Max. length	4Meters
Relative Humidity	≤60%RH



### High Voltage Power Supply LN-S009

Operating Voltage	110V/60Hz or 220V/50Hz
Output Voltage	7.0KVx2
Output Current	Max.4.5mA

### Ionizing Air Snake LN-S080A



\* March LN-S007 High Voltage Power Supply

Operating Voltage	4.6KV(LN-S007)
Current Consumption	350uA
Operating Temperature	0-50°C
Weight	1.0kg
Length of Hose	33cm
Air velocity	5~70psi
Air Flow	0.8SCFM at 10PSI 5.5SCFM at 50PSI 11.5SCFM at 100PSI
HV cable length	2meters
Operating air velocity	10m/sec

### Wrist Strap Tester LN-S035



Operating Temperature	0°C-31°C
Relative Humidity	0%-90%RH
Size	70mm(L)x256mm (W)x100mm(H)
Weight	185g

### Surface Resistance Tester LN-S030



Operating Voltage	9V DC
Size	137mm(L)x76mm(W)x30mm(H)
Work Time	40 Hours
Weight	120g
Operating Temperature	0-50°C
Relative Humidity	0%-90%RH

### Smoke Absorber LN-493



Power	14W(60Hz) 16W(50Hz)
	0.93-1.07m <sup>3</sup> /min
Size	167(L)x101(W)x182 (H)mm
Weight	About 1.5kgs
Accessories	Filter(3pcs)

### Wrist Strap/footwear Tester LN-S031



Operating Temperature	0-31°C
Humidity	0%-90%RH
Size	Tester: 156(L)x97(W)x40(H)mm
	Shelf: 400(L)x250(W)x800(H)mm
	Pedal: 400(L)x450(W) x20(H)mm
Weight	6.5kg
Height adjustment	900mm-1470mm

**Electro Static Field Meter**



**SIMCO FMX-003**



**Quick 431**

Model	SIMCO FMX-003	Quick 431
Power Supply	9V Battery	9V Battery
Display Mode	LCD display and with range synchronous display	LCD display and with range synchronous display
Test Range	0~±20.0KV	0~±22.0KV
Test Range of Ion balance	0~±200V	0~±220V
Standard Distance(Static Test)	25mm(±1mm)	25mm(±0.5mm)
Test Accuracy	±(10%)	±(10%+1)
Standby Current	<3uA	<3uA
Working Environment	10°C-40°C Relative Humidity 0-60%	10°C-50°C Relative Humidity 0-80%
Working Current	<15mA	<15mA
Casing	ESD Design	ESD Design
Volume	115×65×25mm(L×W×H)	125×70×25mm(L×W×H)
Weight	Approx.130g(Including battery)	Approx.200g(Including battery)

**ESD Vacuum**



**HANDI-VAC HV-X ESD Vacuum Pen**



**BULB-VAC ESD Vacuum Pen**



**LN-8920 ESD Vacuum Pen**

**Desk/Bench Top Magnifying Lamp**



**LN-208**



**LN-228A**



**LN-228B**



**LN-228**

Model	LN-208 Desk/Bench top Magnifying Lamp	LN-228A Desk Magnifying Lamp	LN-228B Desk Magnifying Lamp	LN-228 Desk/Bench top Magnifying Lamp
Specifications	208	228A	228B	228
Supply Voltage	220V	110V/220V	110V/220V	110V/220V
LENS	Diameter 90MM	Diameter 125MM	Diameter 125MM	Diameter 125MM
Magnification	x3,x5	x3,x5,x8	x3,x5,x8	x3,x5,x8
Adjustable Extent	450mm	500mm	700mm	1000mm
Photo chromic	Three Primary Colors	Daylight Color	Daylight Color	Daylight Color
Characteristics	Desktop, Folding Supporting-arm	Desktop, Straight Supporting arm	Desktop, Folding Supporting-arm	Table Clamping, Folding Supporting arm